

NOTES:

1. THE FOOTCANDLE LEVELS AS SHOWN ARE BASED ON THE FOLLOWING CRITERIA. ANY SUBSTITUTIONS IN SPECIFIED FIXTURES OR CHANGES TO LAYOUT WILL AFFECT LIGHTING LEVELS SHOWN AND WILL NOT BE THE RESPONSIBILITY OF SECURITY LIGHTING.
2. SECURITY LIGHTING SYSTEMS MODEL # ASB1000-MH-DB-MT
3. LAMP TYPE, WATTAGE METAL HALIDE, 1000 WATT
4. LUMEN OUTPUT 110,000 LUMENS
5. MOUNTING HEIGHT 24'
6. THE CONTRIBUTION OF THE METAL HALIDE SPRETT / BUILDING LIGHTING IS NOT REFLECTED ON THIS DRAWING.
7. DISTANCE BETWEEN READINGS 10'
8. FINAL ADJUSTMENTS TO AIMING ANGLE/DIRECTION OF FIXTURES MAY BE REQUIRED TO ELIMINATE LIGHT RESPLASH OR GLARE ONTO ADJOINING PROPERTIES OR ROADWAYS.
9. FOOTCANDLE LEVELS SHOWN ARE MAINTAINED.
10. MAINTENANCE FACTOR USED ON THIS DRAWING IS .75

\* POLES SPECIFIED ON THIS DRAWING ARE RATED FOR AN 80 MPH WIND LOAD. FOR AREAS WHERE THE WIND LOAD CRITERIA EXCEEDS 80 MPH, PLEASE CONSULT FACTORY FOR PROPER POLE SPECIFICATION AND MODEL NUMBER.

NOTE: ALL FIXTURES TO BE INSTALLED TILTED AT A 30 DEGREE ANGLE. UNLESS OTHERWISE SPECIFIED.

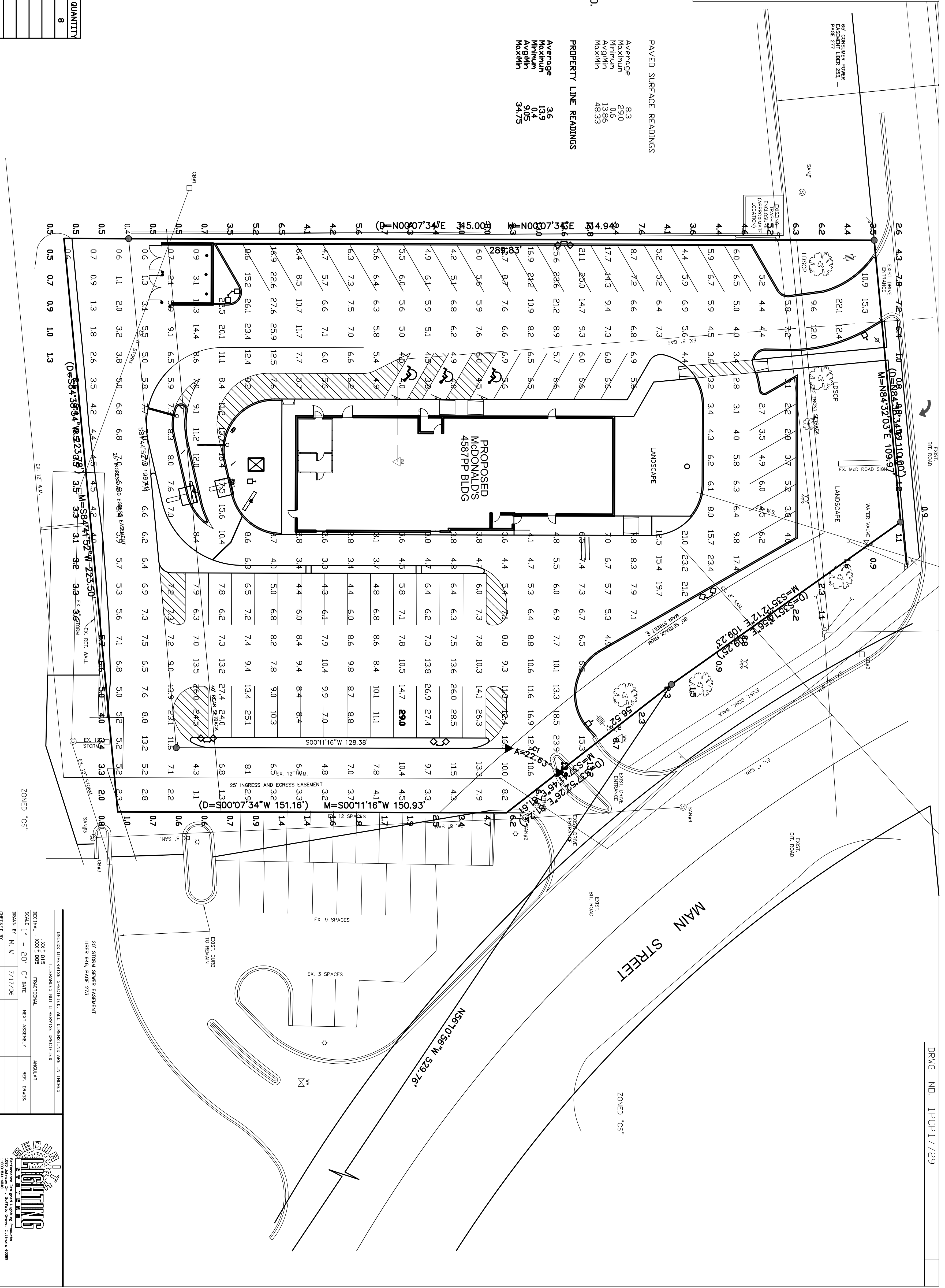
THIS LIGHTING SYSTEM REPRESENTS ILLUMINATION LEVELS CALCULATED FROM LABORATORY DATA. APPROVED METHODS FOR THE ACTUAL PERFORMANCE OF ANY MANUFACTURER'S LUMINAIRE MAY VARY DUE TO VARIATION IN ELECTRICAL VOLTAGE, TOLERANCE IN LAMPS, AND OTHER VARIABLE FIELD CONDITIONS.

PAVED SURFACE READINGS

Average	8.3
Maximum	29.0
Minimum	0.6
Average	13.95
Maximum	49.33

PROPERTY LINE READINGS

Average	3.6
Maximum	13.9
Minimum	0.4
Average	9.05
Maximum	34.75



FIXTURE TYPE	SYMBOL	QUANTITY	TYPE	QUANTITY	POLE TYPE	QUANTITY
ASB1000-MH-DB-MT	☐	13	TT-24	5	SF-22-DB-TT-CY	8

UNLESS OTHERWISE SPECIFIED, ALL DIMENSIONS ARE IN INCHES. DIMENSIONS NOT OTHERWISE SPECIFIED.

DATE	7/17/05
BY	M. W.
CHECKED BY	M. W.
APPROVED BY	
APPROVED BY	
SCALE	AS SHOWN
PROJECT NO.	1PCP17729

POINT-BY-POINT FOOTCANDLE PLLOT FOR  
 McDONALD'S  
 160 CHICAGO DR.  
 GERMANTOWN, MI

1PCP17729