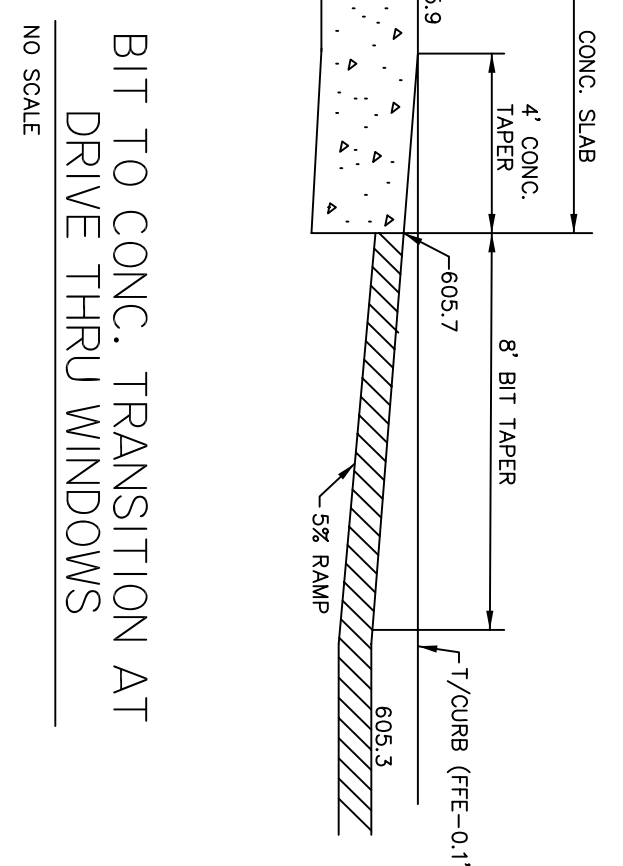




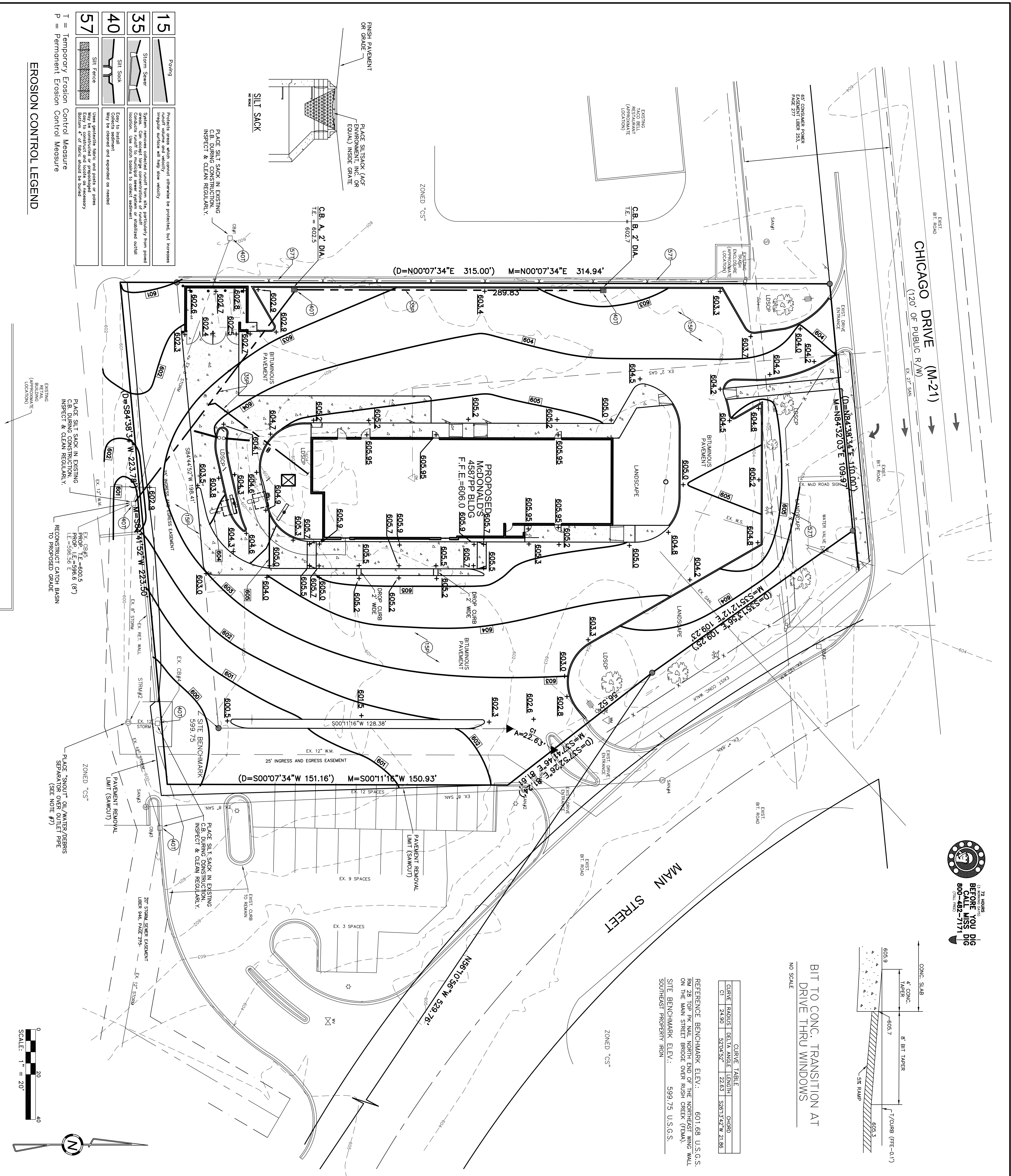
CHICAGO DRIVE (M-21)
(120' OF PUBLIC R/W)



CURVE TABLE

CURVE	RADIUS	DELTA ANGLE	LENGTH	CHORD
C1	24.90'	52°04'52"	22.63'	15.873'±
C2	5724.52'	22.63'	15.873'±	21.88'

REFERENCE BENCHMARK ELEV.: 601.68 U.S.G.S.
 BUT 28 TOP OF KILL NORTH END OF THE NORTHEAST LANE WALL
 ON THE MAIN STREET BRIDGE OVER RUSH CREEK (FMA)
 SITE BENCHMARK ELEV.: 599.75 U.S.G.S.
 SOUTHEAST PROPERTY IRON



- SITE GRADING & UTILITY NOTES**
- ANY WORK WITHIN CHICAGO DRIVE R/W REQUIRES A PERMIT FROM THE MICHIGAN DEPT. OF TRANSPORTATION.
 - VERIFY LOCATION AND ELEVATION OF SANITARY AND WATER SERVICES PRIOR TO CONSTRUCTION.
 - UTILITY AND EXISTING UTILITY CONNECTIONS AS SHOWN COORDINATE WITH THE APPROPRIATE UTILITY PROVIDERS PRIOR TO CONSTRUCTION.
 - CONTRACTOR TO PROVIDE TRAFFIC CONTROL AS REQUIRED DURING CONSTRUCTION. MAINTAIN ACCESS TO EASTERN DRIVE ALONG MAIN STREET.
 - PROPOSED SITE IMPROVEMENTS RESULT IN A NET REDUCTION OF IMPERVIOUS SURFACE.
 - EXISTING IMPERVIOUS SURFACE = 42,600 S.F.±
 PROPOSED IMPERVIOUS SURFACE = 40,650 S.F.±
 NET REDUCTION = 1,950 S.F.±
 - THE SITE LIES WITHIN A 100'-YR FLOODPLAIN (ELEVATION = 605'). A PERMIT HAS BEEN APPLIED FOR FROM THE MDCO TO PLACE FILL IN THE FLOODPLAIN TO RAISE THE LOWEST OPENING OF THE PROPOSED BUILDING 1.0' ABOVE THE FLOODPLAIN ELEVATION.
 - PLACE "SNOUT" OIL/WATER/DEBRIS SEPARATORS OVER OUTLET PIPE AS INDICATED CONTACT MFG FOR ORDERING & PRICING INFO.
 - BEST MANAGEMENT PRACTICES, INC.
 531 W. ANCHER ROAD
 LIME, CT 06271
 PHONE: 860-439-0808
 FAX: 860-439-0809
 WEB: WWW.BMPINC.COM

SEWERS

ITEM	DESCRIPTION	INVERT	PIPE SIZE	R/W
STRM#2	STORM	N 596.54	12" RCP	599.61
CB#1	CATCHBASIN	NE 595.97	12" RCP	599.87
CB#2	CATCHBASIN	W 596.89	6" RCP	599.87
CB#3	CATCHBASIN	NW 602.08	12" RCP	604.08
CB#4	CATCHBASIN	SE 602.02	12" RCP	600.13
CB#5	CATCHBASIN	SW 596.29	12" RCP	600.13
CB#6	CATCHBASIN	SE 598.13	12" RCP	598.85
CB#7	CATCHBASIN	NW 597.05	6" RCP	599.39
CB#8	CATCHBASIN	E 596.95	6" RCP	599.39

PARKING INFORMATION

TOTAL SPACES	30
SPACES 9' X 21'	60 *
SPACES 8' X 20'	90 *
HOOP SPACES 8' X 18'	60 *

DCI Engineering, P.C.
 160 CHICAGO DRIVE (M-21)
 CHICAGO, ILL 60611
 PHONE: 616-878-2781
 FAX: 616-878-2785

WESTSHORE CONSULTING
 2534 BLACK CREEK ROAD
 MUSKOGEE, MI 49444
 (DATED: 7/31/2001)

SITE GRADING & EROSION CONTROL PLAN

PROJECT STREET ADDRESS: 160 CHICAGO DRIVE (M-21)

TOWNSHIP: STATE COUNTY: OTTAWA
 GEORGETOWN MICHIGAN

REGIONAL DWG. NO: MI-06-109 SITE LOCATION CODE NO: 021-0204



THESE PLANS AND SPECIFICATIONS ARE THE PROPERTY OF McDONALD'S CORPORATION AND SHALL NOT BE REPRODUCED WITHOUT THEIR WRITTEN PERMISSION.

PLAN APPROVALS

SIGNATURE (2 REQUIRED)	DATE

CO-SIGN SIGNATURES

REGIONAL MGR.	CONST. MGR.	OPERATIONS DEPT.	REAL ESTATE DEPT.

CONTRACTOR

OWNER	CONTRACTOR

STATUS

DATE DRAWN	DATE CHECKED	DATE AS-BUILT
6/28/06	6/28/06	

BY: JAC
 JMB

REV

REV	DATE	DESCRIPTION	BY	ISSUE REF
1	7/10/06	REVISED PER PRE-APPLICATION MEETING		
2	7/18/06	ISSUED FOR SITE PLAN APPROVAL		
3	7/24/06	REVISED BUILDING FOOTPRINT		
4	7/24/06	REVISED PER O.C.D.C. REVIEW		

DCI #00037