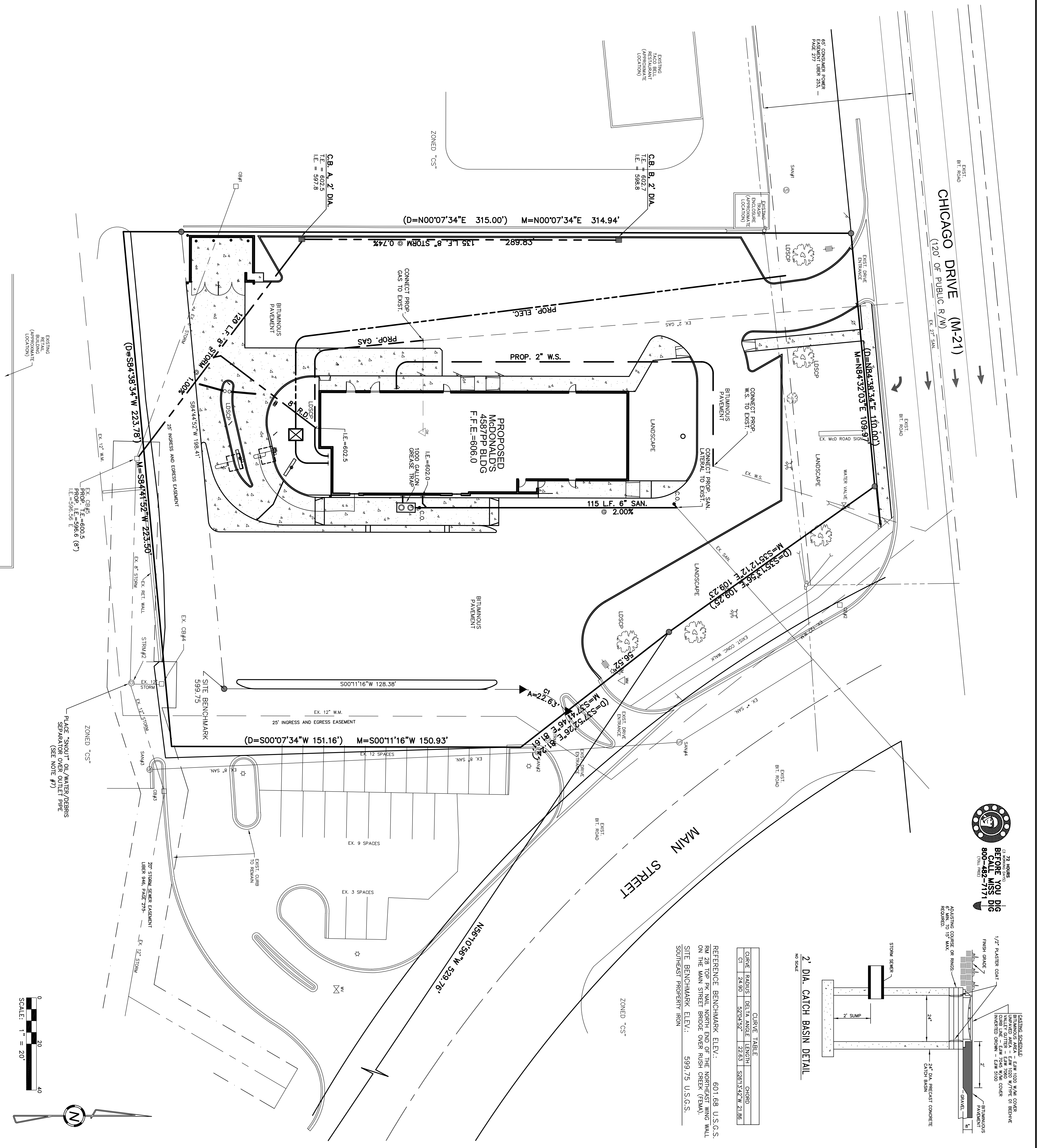


CURVE TABLE

CL	RADIUS	DELTA ANGLE	LENGTH	CHORD
1	24.90'	52°04'52"	22.653'	15.8713'±

REFERENCE BENCHMARK ELEV.: 601.68 U.S.G.S.
 BUT 28' TOP OF KILL NORTH END OF THE NORTHEAST RAINWALL
 ON THE MAIN STREET BRIDGE OVER RUSH CREEK (F.M.A.)
 SITE BENCHMARK ELEV.: 599.75 U.S.G.S.
 SOUTHEAST PROPERTY IRON



SITE GRADING & UTILITY NOTES

- ANY WORK WITH CHICAGO DRIVE E/W REQUIRES A PERMIT FROM THE MICHIGAN DEPT. OF TRANSPORTATION.
 - VERIFY LOCATION AND ELEVATION OF SANITARY AND WATER SERVICES PRIOR TO CONSTRUCTION.
 - UTILITY AND EXISTING UTILITY CONNECTIONS AS SHOWN COORDINATE WITH THE APPROPRIATE UTILITY PROVIDERS PRIOR TO CONSTRUCTION.
 - CONTRACTOR TO PROVIDE TRAFFIC CONTROL AS REQUIRED DURING CONSTRUCTION. MAINTAIN ACCESS TO EASTERN DRIVE ALONG MAIN STREET.
 - PROPOSED SITE IMPROVEMENTS RESULT IN A NET REDUCTION OF IMPERVIOUS SURFACE.
 - EXISTING IMPERVIOUS SURFACE = 42,600 S.F.±
 PROPOSED IMPERVIOUS SURFACE = 40,650 S.F.±
 NET REDUCTION = 1,950 S.F.±
 - THE SITE LIES WITHIN A 100-yr FLOODPLAIN (ELEVATION = 605). A PERMIT HAS BEEN APPLIED FOR FROM THE MDCO TO PLACE FILL IN THE FLOODPLAIN TO RAISE THE LOWEST OPENING OF THE PROPOSED BUILDING 1.0' ABOVE THE FLOODPLAIN ELEVATION.
 - PLACE "SNOUT" OIL/WATER/DEBRIS SEPARATORS OVER OUTLET PIPE AS INDICATED CONTACT WFO FOR ORDERING & PRICING INFO.
- BEST MANAGEMENT PRACTICES, INC.
 531 MT ARCHER ROAD
 LIME, CT 06621
 PHONE: 860-327-5208
 FAX: 860-327-5209
 WEB: WWW.BMPINC.COM

SEWERS

STRA#	DESCRIPTION	INVERT	PIPE SIZE	R/W
STRA#1	STORM	N 596.64	12" RCP	599.61
STRA#2	MANHOLE	NE 595.97	12" RCP	599.87
CB#1	CATCHBASIN	W 596.89	6" RCP	604.08
CB#2	CATCHBASIN	NW 602.08	12" RCP	600.13
CB#3	CATCHBASIN	SW 596.29	12" RCP	600.13
CB#4	CATCHBASIN	S 596.13	12" RCP	598.85
CB#5	CATCHBASIN	NW 597.05	6" RCP	599.39

SEWERS

ITEM	DESCRIPTION	INVERT	PIPE SIZE	R/W
SAW#1	SANITARY FLOWS EAST	602.65	8" RCP	603.06
SAW#2	MANHOLE	N 591.20	8" RCP	600.33
SAW#3	SANITARY NORTH	S 591.24	8" RCP	604.41
SAW#4	SANITARY SOUTH	SW 590.14	8" RCP	604.41
STRA#1	STORM	SW 600.04	16" RCP	602.82

PARKING INFORMATION

TOTAL SPACES	30	SPACES 9' X 21'	60 *
	26	SPACES 9' X 20'	90 *
	3	HOPP SPACES 8' X 18'	60 *

SITE PLANNING & ENGINEERING

DCI Engineering, P.C.
 2010 Briar Center Ave SW
 Bryanton, MI 49715
 Phone: 616-787-2781
 Fax: 616-787-2185

UTILITY PLAN

PROJECT STREET ADDRESS: 160 CHICAGO DRIVE (M-21)

TOWNSHIP: GEORGETOWN
 STATE: MICHIGAN
 COUNTY: OTTAWA

REGIONAL DWG. NO: MI-06-109
 SITE LOCATION CODE NO: 021-0204



THESE PLANS AND SPECIFICATIONS ARE THE PROPERTY OF McDONALD'S CORPORATION AND SHALL NOT BE REPRODUCED WITHOUT THEIR WRITTEN PERMISSION.

OFFICE: MICHIGAN REGION
 ADDRESS: 1021 KARL GREMEL DR., STE. 200 BRIGHTON, MI 48116 PH: (734) 335-9000 FX: (734) 335-9001

REV	DATE	DESCRIPTION	BY	ISSUE REF
1	7/10/06	REVISED PER PRE-APPLICATION MEETING		
2	7/18/06	ISSUED FOR SITE PLAN APPROVAL		
3	7/24/06	REVISED BUILDING FOOTPRINT		
4	7/24/06	REVISED PER O.C.D.C. REVIEW		

STATUS	DATE	BY
PLANNING		
DESIGN		
PERMITTING		
CONSTRUCTION		

DATE: 6/28/06
 JAC
 DATE: 6/28/06
 JMB
 AS-BUILT

CS

DCI #00037