

PROJECT

WELLSPRING COMMUNITY CHURCH ADDITION

4466 BAUER ROAD
GEORGETOWN TOWNSHIP, MI



RELEASE DATE

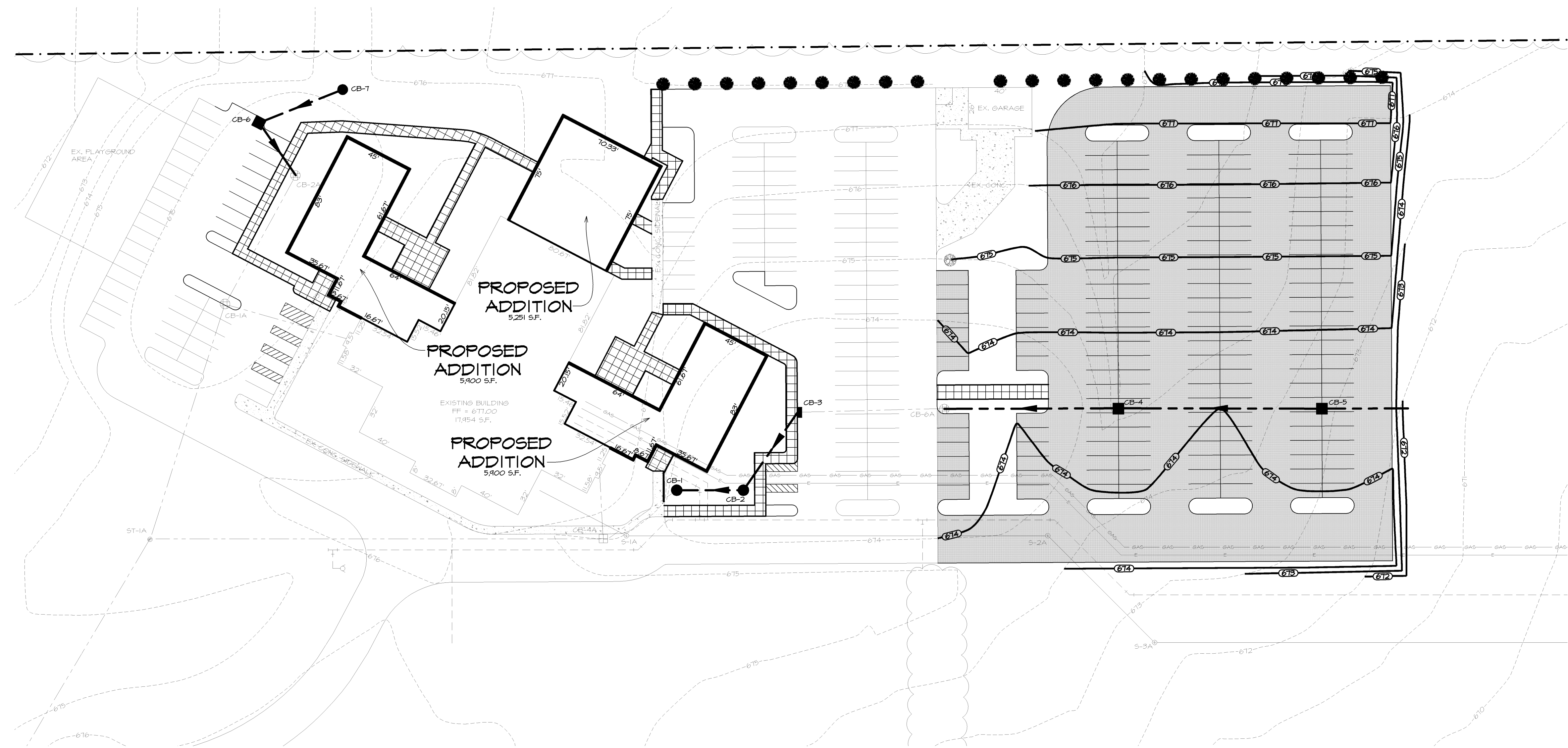
10-8-07	PRE-APPLICATION MEETING
10-10-07	SITE PLAN APPROVAL

PROJECT

0709088

SHEET

C 102



GRADING AND SOIL EROSION & SEDIMENTATION CONTROL LEGEND

- SANITARY SEWER
- STORM SEWER
- WATERMAIN
- STORM WATER BREAK LINE
- PROPOSED CONTOUR
- EXISTING CONTOUR
- CONCRETE SIDEWALK
- STANDARD DUTY PAVEMENT SECTION
- CATCH BASIN
- MANHOLE

EXISTING LEGEND

- HYDRANT
- CATCH BASIN
- SANITARY MANHOLE
- EVERGREEN
- DECIDUOUS TREES
- CONCRETE
- GAS LINE
- ELECTRICAL LINE
- CONTOUR LINE
- WATERMAIN
- SANITARY LINE
- STORM LINE
- TREE LINE

EXISTING STRUCTURE TABLE

ST-1A, 6" DIA. STORM MANHOLE RIM: 676.00 30" (N) INV: 664.30 24" (S) INV: 665.10 15" (E) INV: 670.00 12" (S) INV: 671.00	CB-1A, 4' DIA. CATCH BASIN RIM: 674.00 15" (N) INV: 671.00 12" (S) INV: 671.00	CB-2A, 4' DIA. CATCH BASIN RIM: 674.00 15" (N) INV: 671.70 12" (S) INV: 671.70	CB-3A, 4' DIA. CATCH BASIN RIM: 675.00 12" (N) INV: 671.50	CB-4A, 4' DIA. CATCH BASIN RIM: 674.50 24" (N) INV: 668.90 12" (E) INV: 669.10 21" (SE) INV: 669.90	CB-5A, 4' DIA. CATCH BASIN RIM: 673.00 21" (N) INV: 664.30 12" (N) INV: 664.30 18" (S) INV: 664.30	CB-6A, 4' DIA. CATCH BASIN RIM: 673.00 18" (N) INV: 664.60	S-1A, 4' DIA. SANITARY MANHOLE RIM: 674.30 8" (NE) 4' (S) INV: 671.60	S-2A, 4' DIA. SANITARY MANHOLE RIM: 675.00 8" (N) 4' (S) INV: 668.90	S-3A, 4' DIA. SANITARY MANHOLE RIM: 673.30 8" (NE) 4' (S) INV: 668.50
---	---	---	--	---	--	--	---	--	---

SITE GRADING AND SOIL EROSION CONTROL PLAN
SCALE: 1"=40'

NOT FOR CONSTRUCTION

NOTE:
ALL UTILITIES SHOWN ARE APPROXIMATE LOCATIONS FROM FIELD DATA AND AVAILABLE INFORMATION. THEY SHOULD NOT BE INTERPRETED AS EXACT LOCATIONS NOR SHOULD THEY BE ASSUMED TO BE THE ONLY UTILITIES IN THE AREA.

3 WORKING DAYS BEFORE YOU DIG CALL MISS DIG. 1-800-482-7171