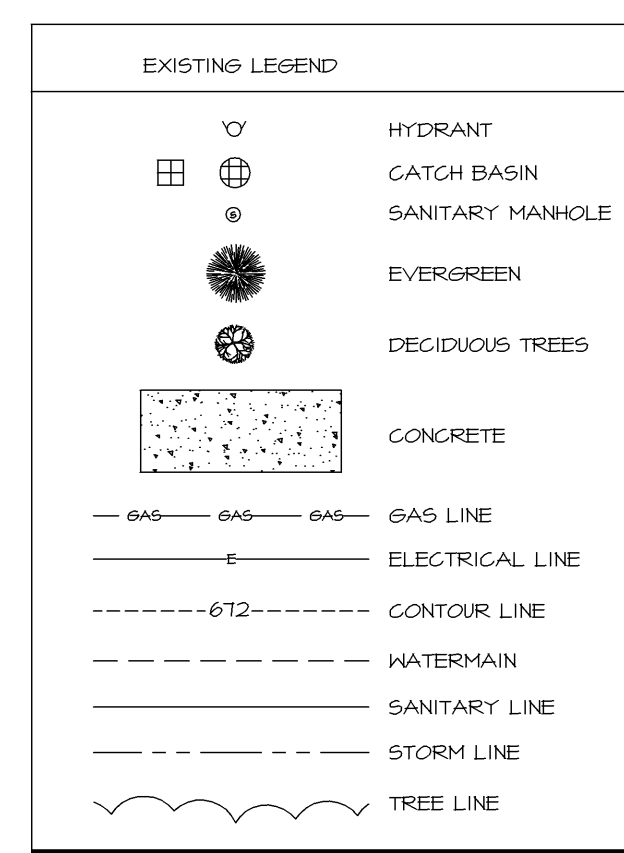
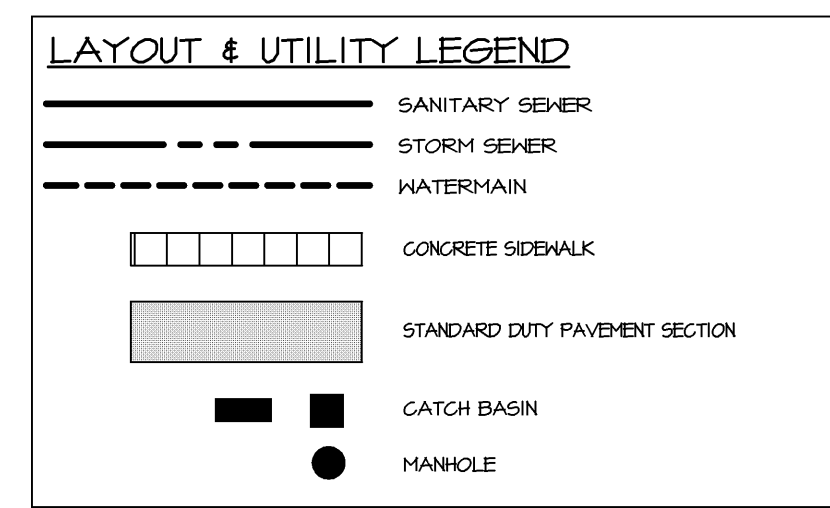
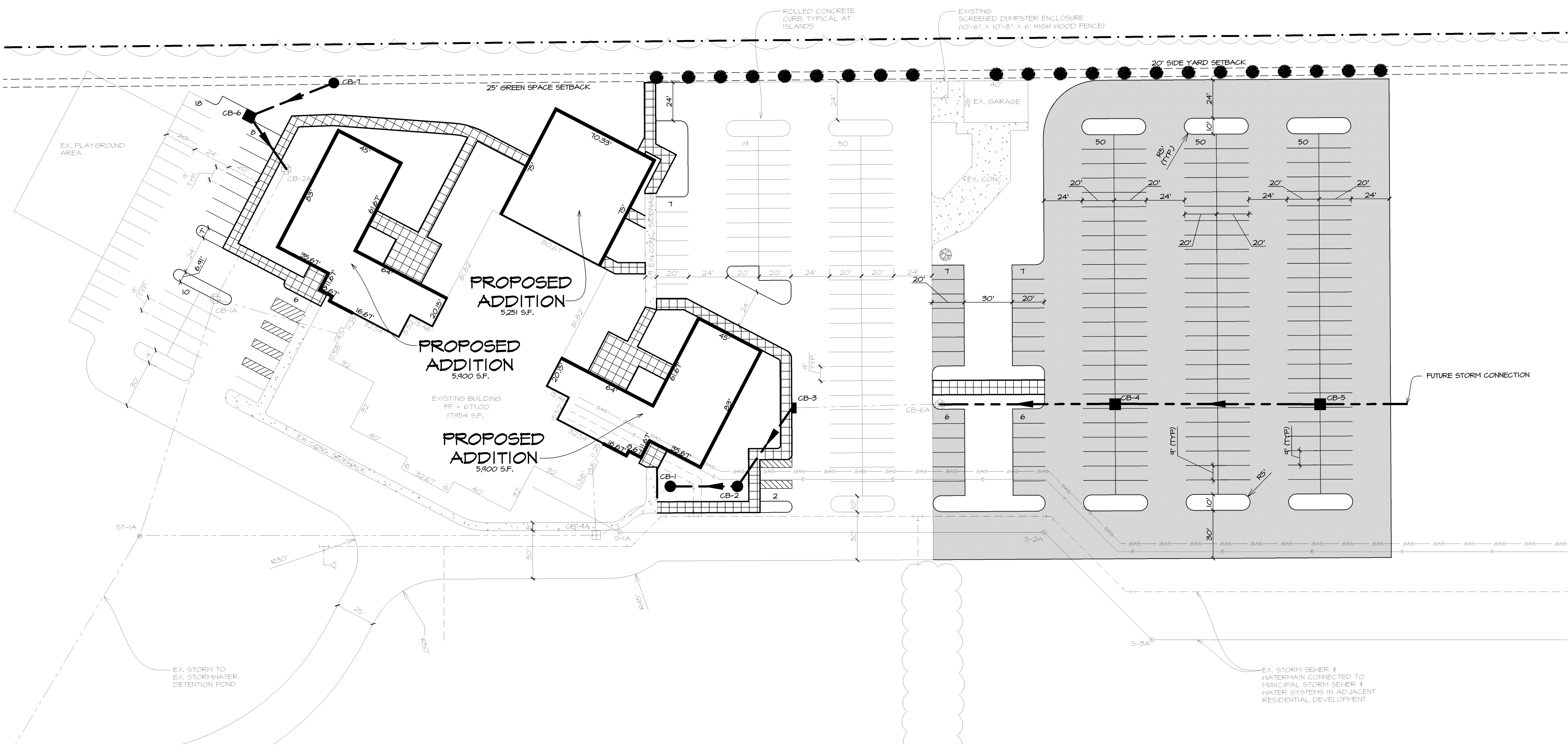


**PROPERTY DESCRIPTION:**  
 THE EAST 1/2 OF THE EAST 1/2 OF THE SOUTHWEST 1/4 SECTION 7,  
 T6N, R15W, GEORGETOWN TOWNSHIP,  
 OTTAWA CO., MICHIGAN EXCEPT THE NORTH 1321.21 FT. OF THE EAST  
 330 FT. THEREOF, CONTAINING 30.0 ACRES ±

**SITE LIGHTING NOTE:**  
 ALL ILLUMINATION FOR THE PROPOSED PARKING LOTS SHALL BE  
 DEFLECTED AWAY FROM ADJACENT RESIDENTIAL AREAS AND SHALL  
 BE INSTALLED IN SUCH A MANNER AS TO ALLOW THE REDUCTION OF  
 THE AMOUNT OF LIGHT ON OTHER THAN NORMAL PARKING HOURS EACH  
 DAY. THE SOURCE OF ILLUMINATION IN ALL PARKING LOTS ABUTTING  
 A RESIDENTIAL AREA SHALL NOT BE MORE THAN TWENTY-FIVE (25)  
 FEET ABOVE THE PARKING LOT SURFACE.

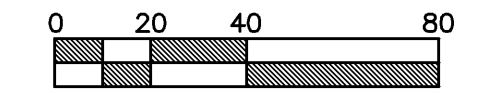


SEE SHEET C100 FOR PARKING TABULATION

**EXISTING STRUCTURE TABLE**

ST-1A, 6" DIA. STORM MANHOLE RIM: 676.00 30" (S) INV: 664.30 24" (E) INV: 665.10 15" (E) INV: 670.30	CB-5A, 4" DIA. CATCH BASIN RIM: 673.00 21" (N) INV: 664.30 12" (W) INV: 664.30 18" (S) INV: 664.30
CB-1A, 4" DIA. CATCH BASIN RIM: 674.00 15" (N) & (E) INV: 671.00 12" (S) INV: 671.00	CB-6A, 4" DIA. CATCH BASIN RIM: 673.00 18" (N) INV: 669.60
CB-2A, 4" DIA. CATCH BASIN RIM: 674.00 15" (N) INV: 671.70 12" (S) INV: 671.70	S-1A, 4" DIA. SANITARY MANHOLE RIM: 674.30 8" (E) & (S) INV: 671.60
CB-3A, 4" DIA. CATCH BASIN RIM: 675.00 12" (N) INV: 671.50	S-2A, 4" DIA. SANITARY MANHOLE RIM: 675.00 8" (N) & (S) INV: 668.90
CB-4A, 4" DIA. CATCH BASIN RIM: 674.50 24" (N) INV: 668.90 12" (E) INV: 668.90 21" (S) INV: 668.90	S-3A, 4" DIA. SANITARY MANHOLE RIM: 673.30 8" (E) & (S) INV: 668.50

**SITE LAYOUT & UTILITY PLAN**  
 SCALE: 1"=40'



NOT FOR CONSTRUCTION

**NOTE:**  
 ALL UTILITIES SHOWN ARE APPROXIMATE  
 LOCATIONS FROM FIELD DATA AND  
 AVAILABLE INFORMATION. THEY SHOULD NOT  
 BE INTERPRETED AS EXACT LOCATIONS NOR  
 SHOULD THEY BE ASSUMED TO BE THE ONLY  
 UTILITIES IN THE AREA.

**3 WORKING DAYS**  
 EXCLUDING HOLIDAYS AND SUNDAYS  
**BEFORE YOU DIG**  
 CALL MISS DIG.  
 1-800-482-7171  
 FOR THE LOCATION OF PUBLIC UTILITIES

ARCHITECTS • ENGINEERS

**paradigm design**

550 3 MILE N.W.  
 SUITE B  
 GRAND RAPIDS, MI 49544

PHONE (616) 785 - 5656  
 FAX (616) 785 - 5657  
 WEB PARADIGMAE.COM

**PROJECT**

**WELLSPRING COMMUNITY CHURCH ADDITION**

4466 BAUER ROAD  
 GEORGETOWN TOWNSHIP, MI

**Veneklasen**  
 INCORPORATED  
 GENERAL CONTRACTORS

**RELEASE DATE**

10-8-07	PRE-APPLICATION MEETING
10-10-07	SITE PLAN APPROVAL

**PROJECT**

**0709088**

**SHEET**

**C 1 0 1**