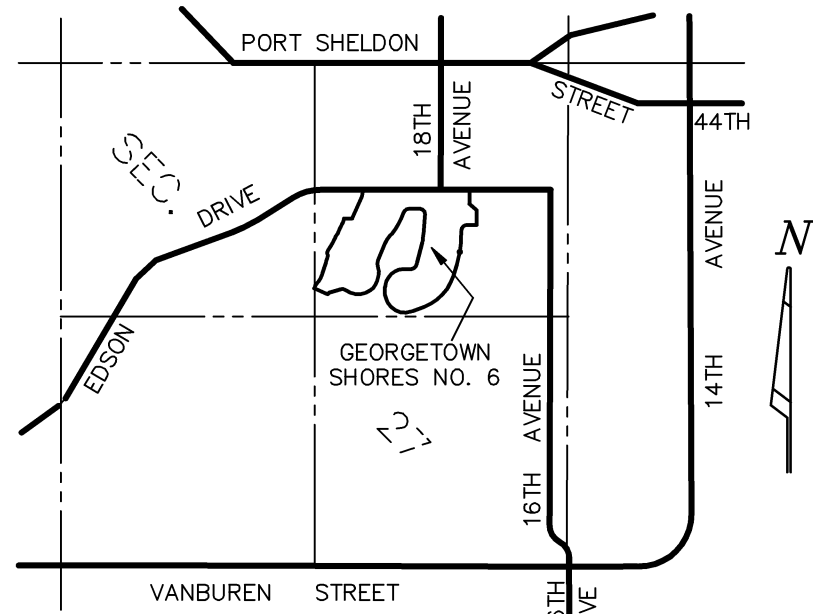
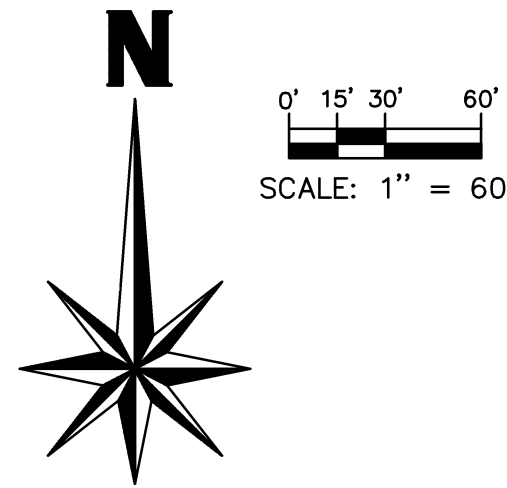
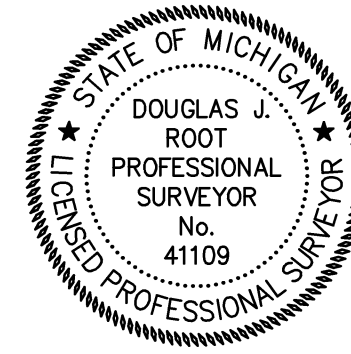


GEORGETOWN SHORES NO. 6
 Part of the NE 1/4, and part of the NW 1/4, Section 27, T6N, R13W
 Georgetown Township, Ottawa County, Michigan
 Sheet 3 of 6



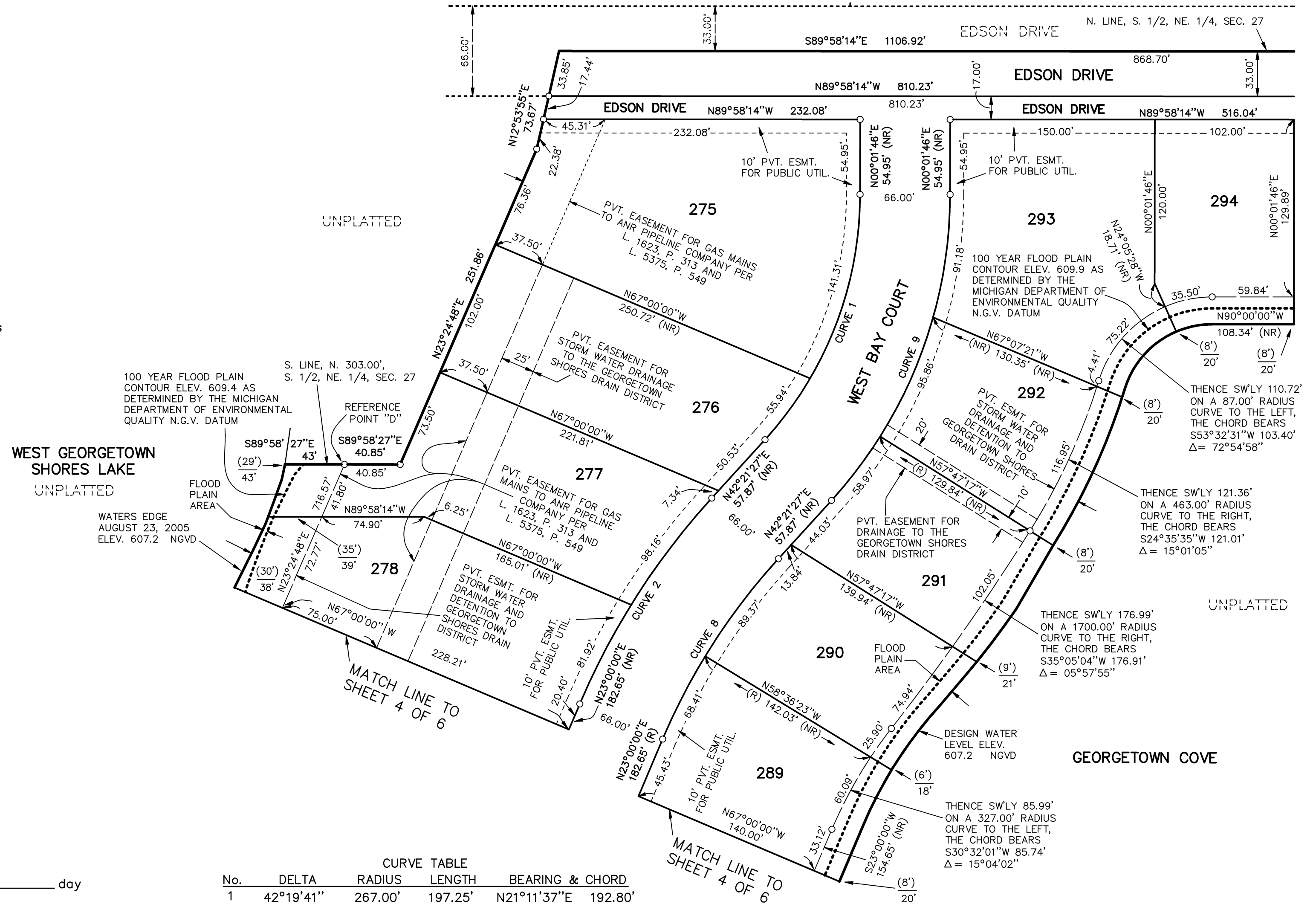
LOCATION MAP
 SCALE: 1" = 2000'

This plat is subject to restrictions as required by the Act 288 of 1967, as amended on certain lots with respect to the requirements of the Michigan Department of Environmental Quality, and the Ottawa County Drain Commissioner which are recorded in Liber _____, Page _____ of records of this county.

GREEN MEADOWS CONDOMINIUMS
 OTTAWA COUNTY CONDOMINIUM
 SUBDIVISION PLAN NO. 142
 L. 1523, P. 233

LEGEND

All dimensions are in feet.
 Plat bearings are based on Georgetown Shores No. 4, Liber 42 of Plats, Pages 64-66.
 "o" = 1/2" diameter steel bar, 36" long, encased in 4" diameter concrete cylinder, 36" long monument.
 All lot corners are marked by 1/2" diameter steel bars, 18" in length with survey cap marked EXXEL 24597.
 Curvilinear measurements are arc measurements.
 R = Radial NR = Non-Radial
 (O') = distance from intermediate traverse line to 100 year flood plain contour
 0' = distance from intermediate traverse line to water's edge.
 □ = monument found as described in Georgetown Shores No. 4, Liber 42 of Plats, Pages 64-66.



WEST GEORGETOWN SHORES LAKE
 UNPLATTED

GEORGETOWN COVE

No.	DELTA	RADIUS	LENGTH	BEARING & CHORD
1	42°19'41"	267.00'	197.25'	N21°11'37"E 192.80'
2	19°21'27"	533.00'	180.08'	S32°40'44"W 179.22'
8	19°21'27"	467.00'	157.78'	S32°40'44"W 157.03'
9	42°19'41"	333.00'	246.01'	N21°11'37"E 240.45'

RECORDING CERTIFICATE
 STATE OF MICHIGAN
 County of Ottawa

This plat was received for record on the _____ day of _____, 20____, at _____ M. and recorded in Liber _____ of Plats, Pages _____

Gary Scholten, Register of Deeds